

PIASTRA

wall tile solutions

 SOELBERG

PIASTRA

wall tile solutions

Perfectly . Planked . Piastra . The Piastra pattern is the easy-to-specify and easy-to-install tile solution for walls with beautiful minimal plank texture. Piastra is made of a combination of MDF planks in varying thickness, height and length creating an intricate arrangement of lines and shadows. You provide your wall dimensions and we provide an array of Piastra to bring life to your surfaces.

SPECIFICATION

CORE	PREMIUM MDF OR FIRE RATED MDF
CORE THICKNESS	3/4" AND 1 1/8"
SIZE	12" x 4" 18" x 4" 24" x 4" 30" x 4" 36" x 4" 12" x 6" 18" x 6" 24" x 6" 30" x 6" 36" x 6"
FINISH	35 - 3D LAMINATE COLORS PAINT GRADE FIELD PAINTED
ORIENTATION	HORIZONTAL OR VERTICAL
FIRE RATING	CLASS A ASTM - E84 FLAME: 15 US AND 20 CANADA SMOKE: 95 US AND CANADA COMPLIES WITH ECC 4-11, ANSI A208.2-2009 AND CARB ATCM93120 FORMALDEHYDE EMISSION LIMITS. ASTM - E84, UL 723 AND CAN/ULC - S102 TESTED
ENVIRONMENTAL	CONTAINS 100% RECYCLED RECOVERED WOOD CONTENT
LEAD TIME	2 WEEKS
WARRANTY	2 YEARS

TOLERANCES

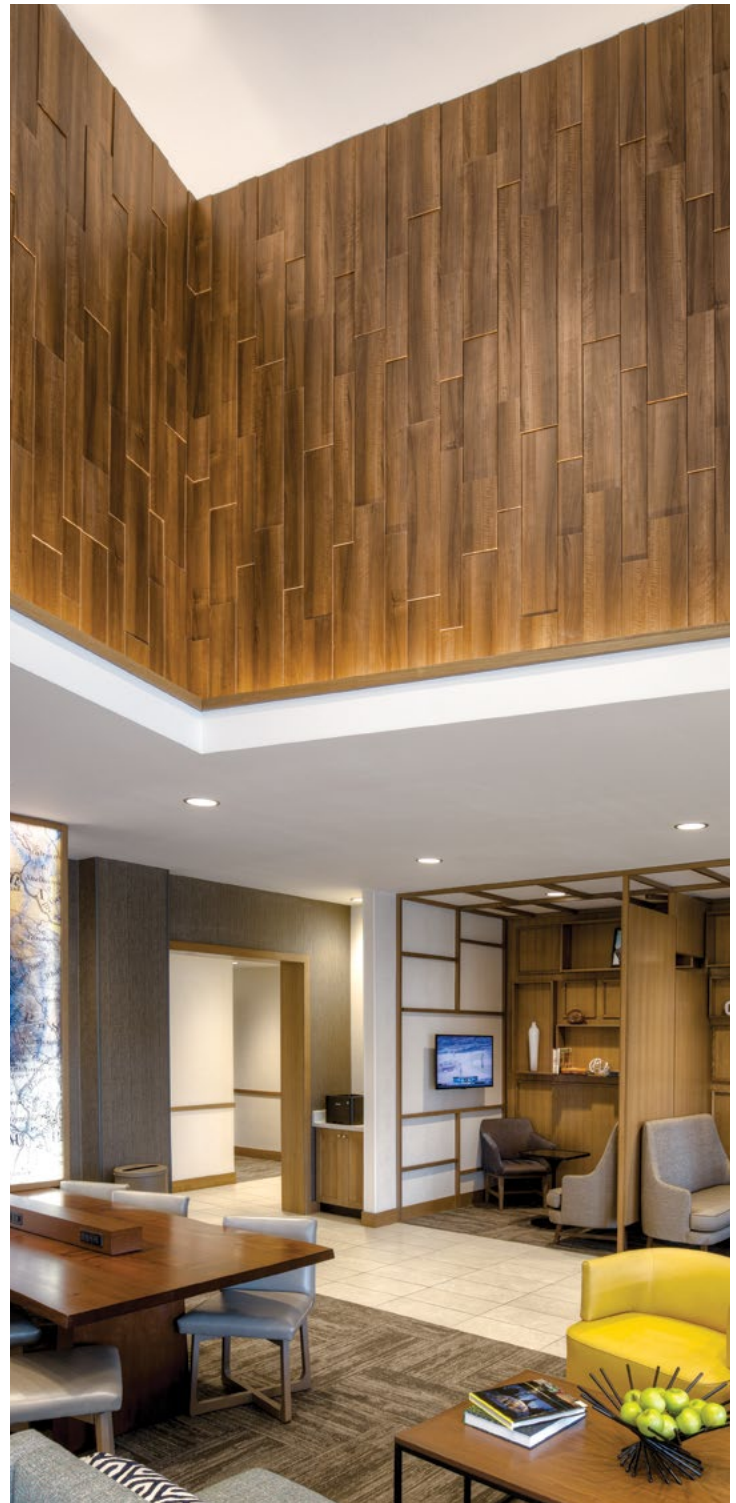
Piastra planks are available in specific sizes. All dimensions and squareness are subject to a 3/16" tolerance.

Each Piastra plank comes with a Melamine backer. Natural bow or warp is common to all wood products. Piastra ordered in paint grade raw material will have increased natural bow. Please compensate with proper installation techniques.

Piastra, like all wood products, will expand and contract nominally with fluctuations in moisture levels. Wood products have a potential expansion of +/- 0.33%. Piastra will grow in high humidity locations and shrink in low level humidity applications. Controlled environments with maintained humidity levels of 25 - 55% is recommended.

MAINTENANCE

Piastra should be dusted and cleaned occasionally to prevent dirt build-up. Stains should be removed with a warm diluted soap solution if necessary in combination with a non-abrasive cleaning sponge. Common cleaning products such as Windex, Simple Green, Fantastik, Formula 409 or 10:1 Water/Bleach solution are acceptable. After cleaning, the surface should be rinsed with clean water and dried with a soft non-abrasive cotton cloth. To test the suitability of a cleaning product, apply to an inconspicuous area to prevent any damage to the surface.

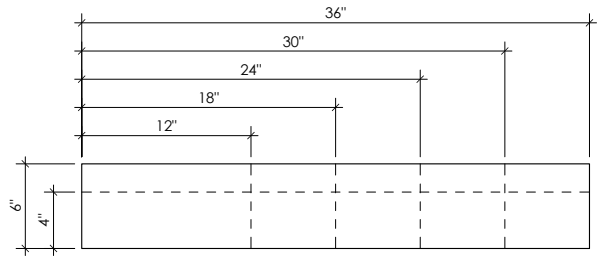
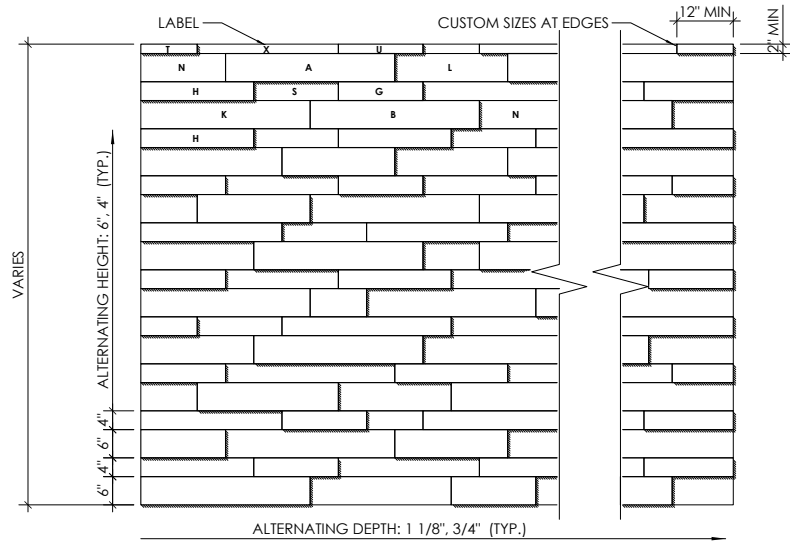


SIZE

TEXTURE IN PLANKS

STANDARD LENGTHS RANGE FROM 12" - 36"
STANDARD STAGGERED HEIGHTS OF 4" AND 6"
STANDARD STAGGERED DEPTHS OF 3/4" AND 1 1/8"

Please provide wall dimensions (width x height) and we tailor our standard Piastra configuration to fit your space. Minimum wall length is 12" with no maximum wall length or height.



FINISH

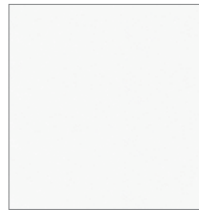
3D LAMINATE

35 COLORS

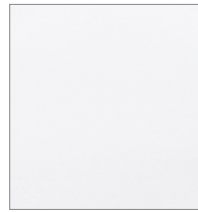
SOLID | METALLIC | WOOD GRAIN | HIGH GLOSS
MELAMINE BACKER

3D laminate (rigid thermofoil or RTF) is a thermoformed decorative surface that is cleanable and durable. Please note: Delamination will occur when 3D laminated products are exposed to heat higher than 150°. Wood grain will always run parallel to the 96" length of the panel

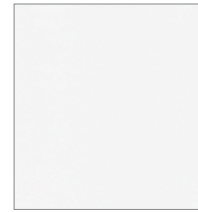
3D Wall Panels can also be ordered unfinished to be painted in the field. Please contract a licensed professional and follow all local building codes and requirements.



FROSTY WHITE



GLACIER WHITE



MATTE WHITE



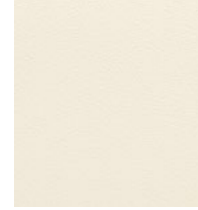
WHITE HG



PORTUNA LIGHT



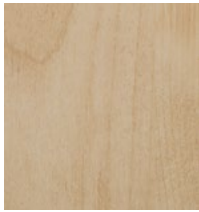
OAK ALABASTER



ANTIQUE WHITE



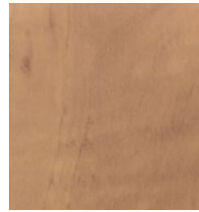
ALMOND



BLONDE MAPLE



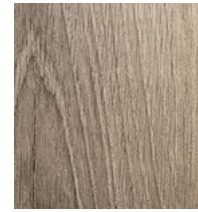
CLEAR MAPLE



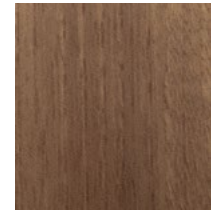
CANDLELIGHT



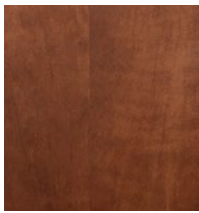
SALINAS OAK



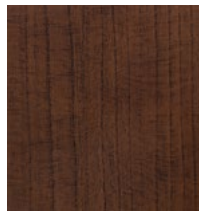
OAK PALOMINO



NATURAL WALNUT



SUMMERFLAME



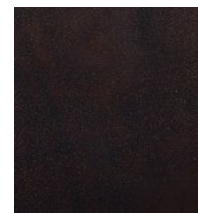
CHERRY BLOSSOM



AMATI WALNUT



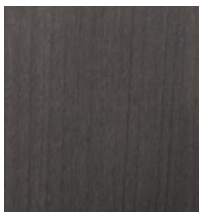
OAK GIBRALTAR



CHOCOLATE PEAR



PORTUNA DARK



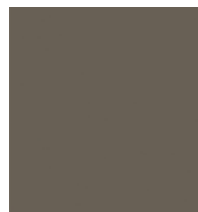
LAUSANNE



OAK ARGENTO



TURMALIN MATTE



UMBRA MATTE



GAUNTLET GREY



SIENA MATTE



SHARK GREY



BLACK



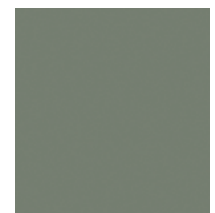
BRUSHED STEEL HG



BRUSHED ALUMINUM



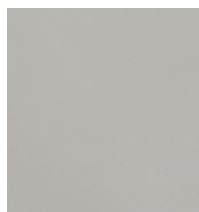
CADET



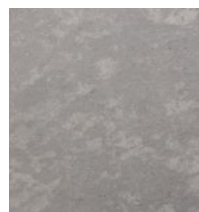
CELADON



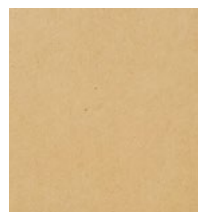
CANADIAN GREY



FASHION GREY



SAHARA STONE



RAW MDF

FINISH CONTINUED

PAINT GRADE

RAW MDF PLANKS
MELAMINE BACKER

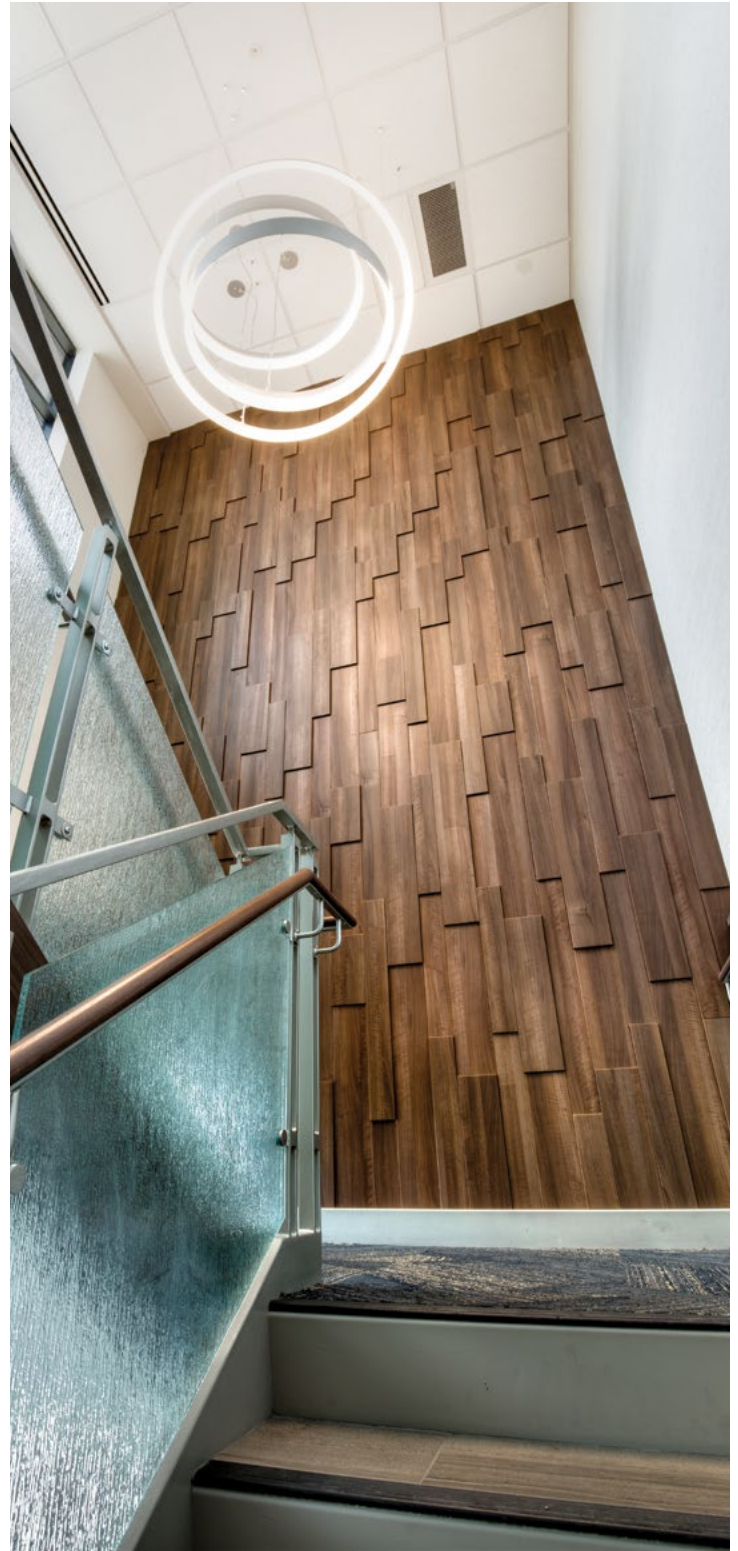
Soelberg does not provide factory paint finished Piastra. Field finishing should be performed by a licensed professional. Professional grade primer and paint are recommended using spray finish.

COLOR CONSISTENCY

Paint Grade unfinished MDF Piastra will not have consistent color from plank to plank as they are made using recycled | recovered wood products. It is not recommended to leave planks unfinished or simply clear coat.

STORAGE & HANDLING

Piastra should be stored flat and in an HVAC controlled environment of 65 - 75° F (18 -24° C) with relative humidity levels of 25 - 55% for at least 48 hours prior to installation. Installation areas must be enclosed and weatherproofed before installation commences.



INSTALLATION

VHB TAPE OR ADHESIVE

Piastra tiles are installed monolithically, placing each tile in the same direction with a staggered repeat vertically or horizontally. Each tile is labeled and a corresponding installation key is provided for correct tile location and placement.

Tools required for installation include a level and measuring tape. Tiles are installed with butt joints.

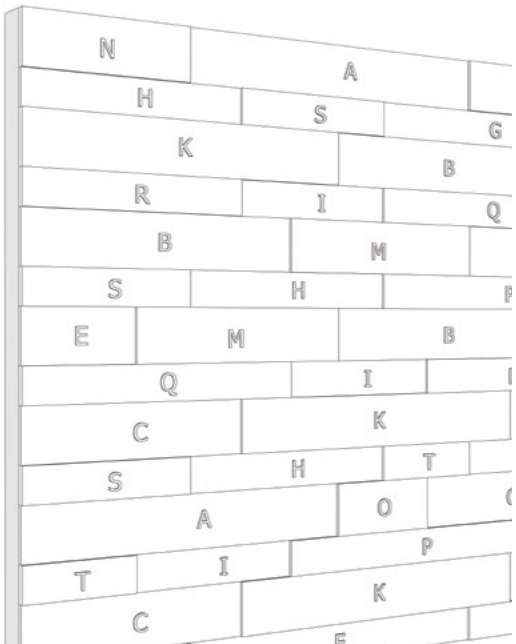
Clean the wall and Piastra surface making it free of dirt, oil and debris.

Using a level line and measuring tape, start installing files at the base of the design and work up installing towards the ceiling.

If using 3M VHB tape, remove paper backing from one side of the tape and apply tape with generous pressure around the perimeter of the back of the tile.

Remove paper backing from the 'wall side' of the tape and press file firmly to the wall, applying pressure for 30-60 seconds.

If using industrial adhesive, bead around the perimeter of the back of the file 1" from the edge. Support or structure may be needed to anchor files while adhesive cures. (VHB tape and adhesive can be used together for stronger adhesion.)



CORNER TREATMENTS

Because all 3D laminate finished Piastra planks have a factory finished edge, there are a number of different corner treatment options. Please work with your installer to determine the best solution for your specific site conditions.

OUTSIDE MITER

A miter joint is made by joining two panels usually cut at 45 degree angles to create a corner. This is a highly desired corner treatment for aesthetics but will require additional time in installation. Soelberg does not provide miter cutting services. All miter cutting should be performed onsite.

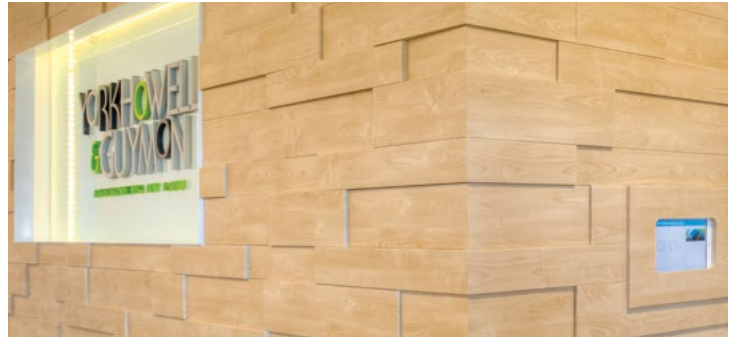
Please contact your sales representative or customer service representative for more details.

OUTSIDE BUTT JOINT

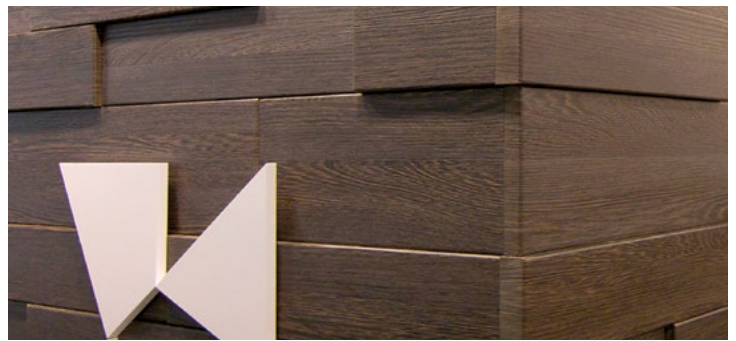
A butt joint is made by joining two panels abutting at right angles to create a corner. The advantage of butt joint installation is ease and strength.

Piastra planks can be overlapped, staggered or installed flush with the corner of the substrate as illustrated to the right.

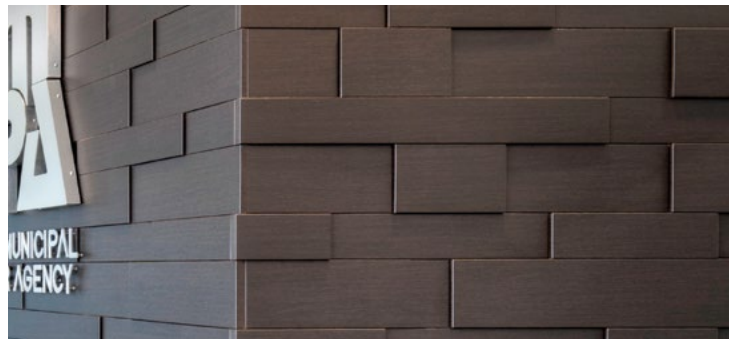
OUTSIDE MITER



OUTSIDE BUTT JOINT



OUTSIDE STAGGERED BUTT JOINT



OUTSIDE FLUSH WALL EDGE

