

MUTO DIVIDER

acoustic panel solutions

 SOELBERG



MUTO DIVIDER

acoustic panel solutions

MUTO Dividers make it easy to define space while combining the beauty of pattern and sound absorbing functionality. Made from 1/2" PET felt, MUTO Dividers are lightweight, easy to install and can cover any surface. From walls and ceilings, to suspended from the ceiling or even used as curtains with rolling track hardware, MUTO does the work.

Make It Cool. Make It Quiet.

SPECIFICATION

CONTENT	100% POLYESTER (PET) FELT		
CORE THICKNESS	1/2" (12MM) FELT		
PATTERNS	BANDA CUBINI LUOGO	BOSCO CURVA PISTA	CAMPO GOCCIO
COLORWAYS	27 COLORWAYS		
PANEL SIZE	48" x 96"		
WEIGHT	1/2 LB SQUARE FOOT		
ACOUSTICS	0.35 NRC		
FIRE RATING	CLASS A ASTM - E84		
ENVIRONMENTAL	DELICARE, MINDFUL MATERIALS & GREENGUARD GOLD CERTIFIED. MUTO IS PRODUCED FROM 100% RECYCLABLE PET FELT WITH A MINIMUM OF 60% PRE-CONSUMER RECYCLED CONTENT.		
LEAD TIME	2 - 3 WEEKS		
WARRANTY	2 YEARS		

TOLERANCE

PET core is a soft fibrous material. All dimensions and squareness are subject to +/- 1/16" tolerance.

MAINTENANCE

Vacuum to remove dirt and dust. Remove spills or spots immediately using a clean damp cloth. Carpet and fabric cleaners can also be used to clean. (Always test an inconspicuous area first.) Compressed air may be used to dust in difficult or hard-to-reach areas.

To disinfect, bleach can be used in accordance with CDC Cleaning & Disinfection instructions. The solution ratio is 5 tablespoons of bleach to 1 gallon of water | 4 teaspoons of bleach to 1 quart of water. Apply solution by spray and wipe off immediately. (Always test in an inconspicuous area first.)

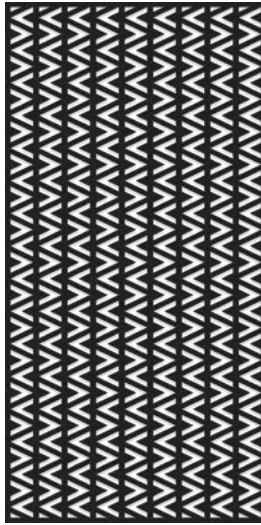


PATTERNS

8 STANDARD PATTERNS

48" x 96" PANELS

(CONTACT YOUR LOCAL SALES REP FOR
CUSTOM PATTERN OPTIONS)



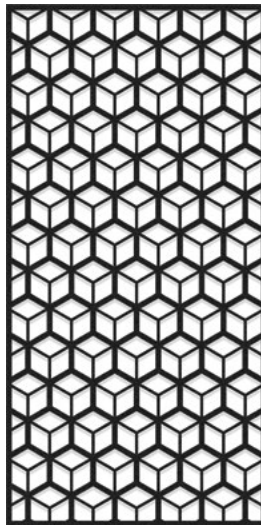
BANDA



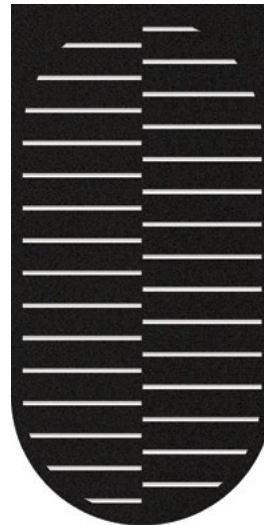
BOSCO



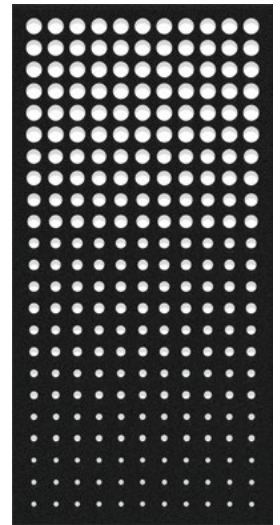
CAMPO



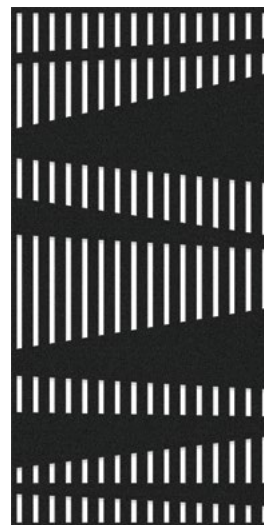
CUBINI



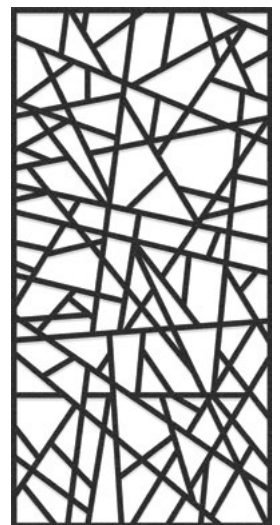
CURVA



GOCCIO



LUOGO

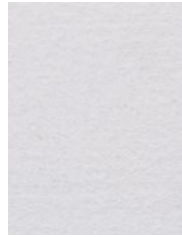


PISTA

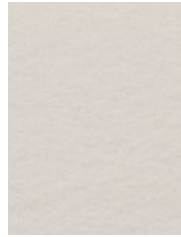
SOLID COLOR

MATTE COLOR

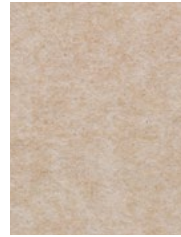
27 STANDARD COLORS
CUSTOM PRINT COLORS AVAILABLE
(CONTACT YOUR LOCAL SALES REP)
100% RECYCLABLE PET FELT



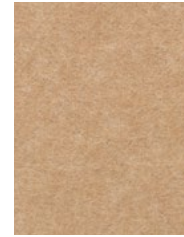
WHITE



BONE



OATMEAL



CAMEL



SAND

TOLERANCES

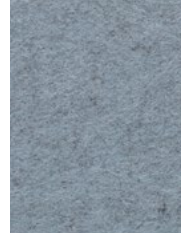
PET felt is made from 100% recyclable polyester plastic. Slight and consistent variations in color, depth, density, and texture are inherent to this core material and should be expected. Color, density and texture will vary by dye lot. MUTO is made with a 'felling' process which results in a textural heathered effect where the fibers consist of multiple tones and shades.



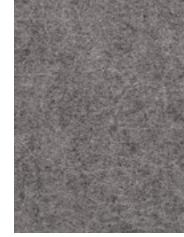
CASHMERE



FOG



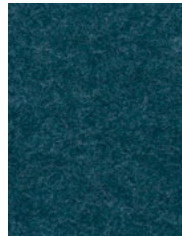
LAMB'S EAR



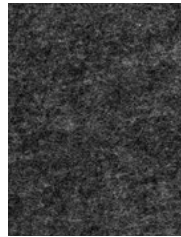
PEWTER



NORDIC KNIT



WINTER WATER



GRAPHITE



BLACK



MIDNIGHT



BLUEBERRY



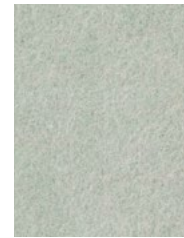
JUNIPER



SPLASH



STORM



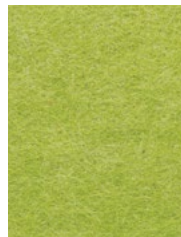
SEAFOAM



SAGE



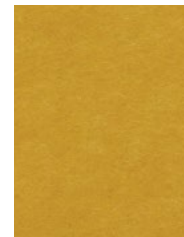
ARTICHOKE



LICHEN



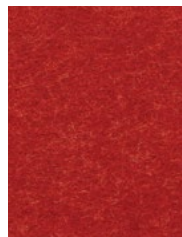
SUNSHINE



QUAKING ASPEN



CLEMENTINE



CHILI PEPPER



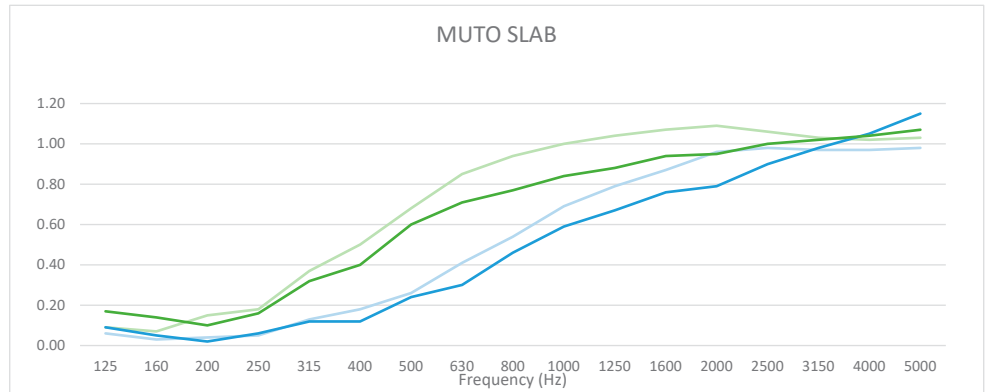
CURRANT

ACOUSTICS

NRC TEST DATA

Higher NRC ratings mean higher sound absorbency. The performance of 1/2" MUTO PET felt core material increases as the depth of air gap increases.

NRC values will vary based on customization and specific installation details. Contact your sales representative to learn more.



PRODUCT	MOUNTING	SAMPLE FREQUENCY (Hz)				NRC
		250	500	1000	2000	
1/2" MUTO	DIRECT	0.06	0.24	0.59	0.79	0.40
	Z-CLIP	0.05	0.26	0.69	0.96	
1" MUTO	DIRECT	0.16	0.60	0.84	0.95	0.65
	Z-CLIP	0.18	0.68	1.00	1.09	

ENVIRONMENTAL

DECLARE, MINDFUL MATERIALS & GREENGUARD GOLD CERTIFIED

We care about the environment and it matters that our materials support healthy and productive interior spaces. We use innovative materials but ensure that they meet the highest level of standards and expectations.

MUTO PET felt core material is 100% recyclable with no added urea formaldehyde.



MUTO
Soelberg Industries

Final Assembly: Orem, UT, United States of America
Life Expectancy: Life of Structure Year(s)
End of Life Options: Salvageable/Reusable in its Entirety, Recyclable (100%)

Ingredients:
MUTO : Polyester Fiber; Baffle Hardware: Steel

Living Building Challenge Criteria: Compliant

I-13 Red List:
 LBC Red List Free % Disclosed: 100% at 100ppm
 LBC Red List Approved VOC Content: Not Applicable
 Declared

I-10 Interior Performance: CDPH Standard Method v1.2-2017
 I-14 Responsible Sourcing: Not Applicable

SOE-0001
 EXP. 01 OCT 2024
 Original Issue Date: 2020

INTERNATIONAL LIVING FUTURE INSTITUTE™ living-future.org/declare

INSTALLATION

ADHESIVE

Use standard construction adhesives (Liquid Nails | Titebond) and apply to the back of the panel maintaining at least a 1" border around the perimeter. Adhere to substrate providing bracing to hold material in place per adhesive curing time instructions.

STAND OFF HARDWARE

Using barrell and cap, secure panel and anchor to substrate as required. Six anchor points recommended for full sized panel.

CABLE SUSPENSION HARDWARE

Select appropriate and necessary anchor and / or screws to fasten top mount to ceiling. Determine location of panel clip (2 clips per panel) and mark and drill for set screw. Tighten set screw to secure clip to panel. Thread wire into gripper and adjust to desired length. Trim excess wire after leveling.

ROLLER HARDWARE

Insert nylon locks in roller plate at provided holes. Drill pilot holes through panel 4 inches from each end. Insert cover plate into holes and align roller plate and cover plate. Tighten plates with screws. Screw until ends are flush with cover plate. Slide roller plates attached to panel into aluminum rail. Insert rail stopper and tighten bolts to fix.

