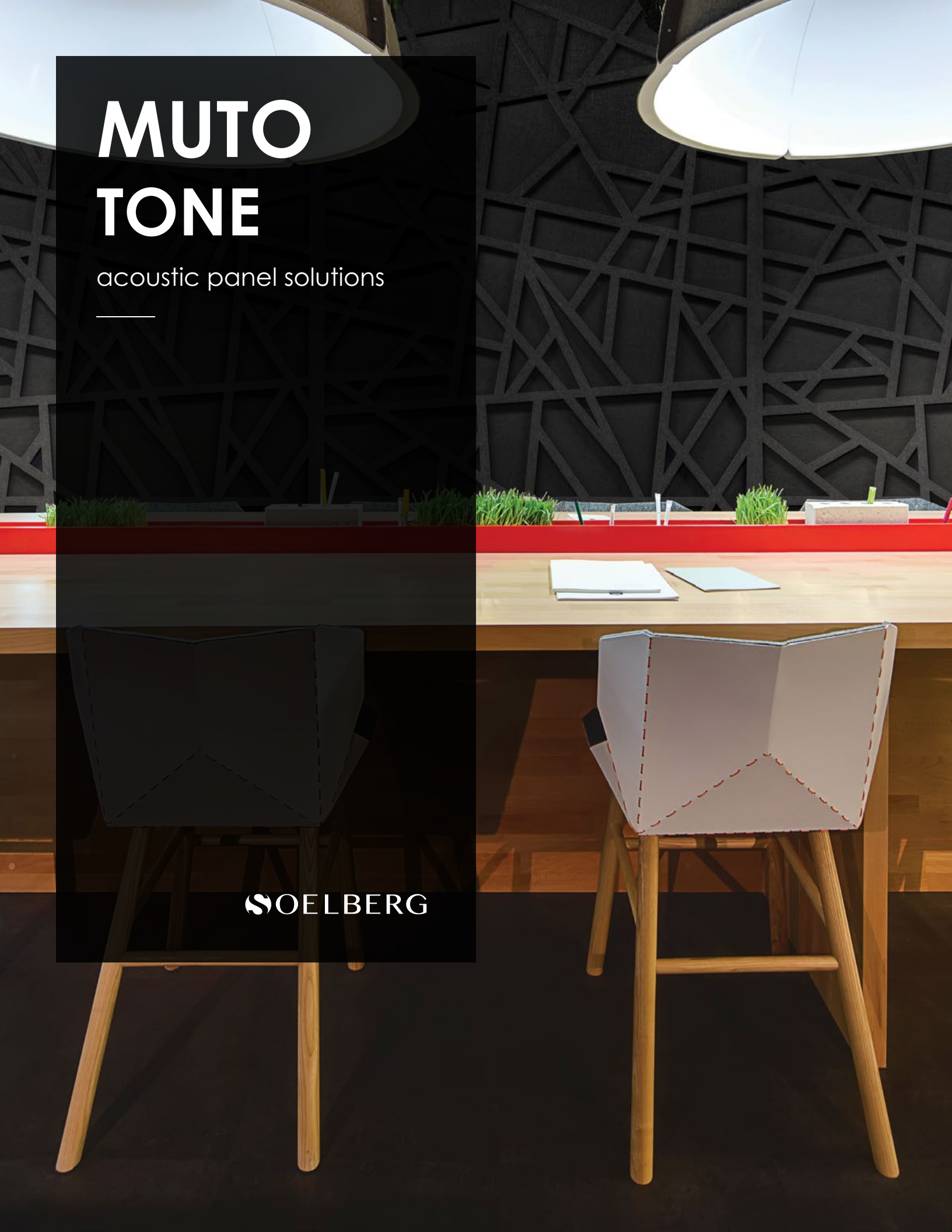
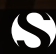


MUTO TONE

acoustic panel solutions



 SOELBERG

MUTO TONE

acoustic panel solutions

MUTO Tone acoustic panels are your solution for creating bold graphic statements that quiet any interior. Made from 2 - 1/2" PET felt panels, MUTO Tone are lightweight, easy to install and can cover any surface. From walls and ceilings and even suspended from the ceiling, let MUTO acoustics do all the sound softening.

Make It Cool. Make It Quiet.

SPECIFICATION

CONTENT	100% POLYESTER (PET) FELT																								
CORE THICKNESS	1" (24MM) FELT																								
PATTERNS	<table><tr><td colspan="3">TONE-ON-TONE</td></tr><tr><td>BANDA TT</td><td>BOSCO TT</td><td>CAMPO TT</td></tr><tr><td>CUBINI TT</td><td>CURVA TT</td><td>GOCCIO TT</td></tr><tr><td>LUOGO TT</td><td>PISTA TT</td><td></td></tr><tr><td colspan="3">TWO-TONE</td></tr><tr><td>BANDA 2T</td><td>BOSCO 2T</td><td>CAMPO 2T</td></tr><tr><td>CUBINI 2T</td><td>CURVA 2T</td><td>GOCCIO 2T</td></tr><tr><td>LUOGO 2T</td><td>PISTA 2T</td><td></td></tr></table>	TONE-ON-TONE			BANDA TT	BOSCO TT	CAMPO TT	CUBINI TT	CURVA TT	GOCCIO TT	LUOGO TT	PISTA TT		TWO-TONE			BANDA 2T	BOSCO 2T	CAMPO 2T	CUBINI 2T	CURVA 2T	GOCCIO 2T	LUOGO 2T	PISTA 2T	
TONE-ON-TONE																									
BANDA TT	BOSCO TT	CAMPO TT																							
CUBINI TT	CURVA TT	GOCCIO TT																							
LUOGO TT	PISTA TT																								
TWO-TONE																									
BANDA 2T	BOSCO 2T	CAMPO 2T																							
CUBINI 2T	CURVA 2T	GOCCIO 2T																							
LUOGO 2T	PISTA 2T																								
COLORWAYS	27 COLORWAYS TO COMBINE																								
PANEL SIZE	48" x 96"																								
WEIGHT	1 LB SQUARE FOOT																								
ACOUSTICS	0.40 NRC OR GREATER																								
FIRE RATING	CLASS A ASTM - E84																								
ENVIRONMENTAL	DELCARE, MINDFUL MATERIALS & GREENGUARD GOLD CERTIFIED. MUTO IS PRODUCED FROM 100% RECYCLABLE PET FELT WITH A MINIMUM OF 60% PRE-CONSUMER RECYCLED CONTENT.																								
LEAD TIME	2 - 3 WEEKS																								
WARRANTY	2 YEARS																								

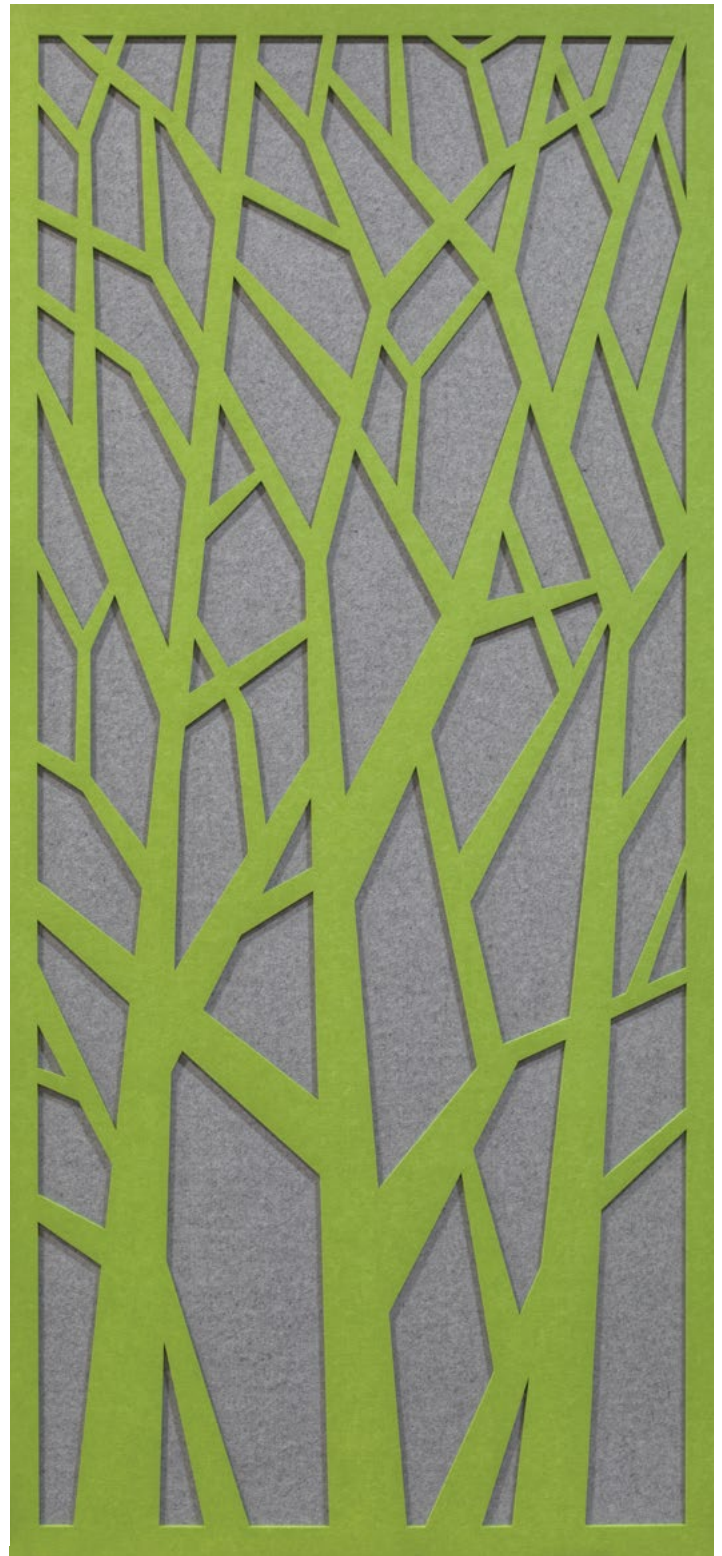
TOLERANCE

PET core is a soft fibrous material. All dimensions and squareness are subject to +/- 1/16" tolerance.

MAINTENANCE

Vacuum to remove dirt and dust. Remove spills or spots immediately using a clean damp cloth. Carpet and fabric cleaners can also be used to clean. (Always test an inconspicuous area first.) Compressed air may be used to dust in difficult or hard-to-reach areas.

To disinfect, bleach can be used in accordance with CDC Cleaning & Disinfection instructions. The solution ratio is 5 tablespoons of bleach to 1 gallon of water | 4 teaspoons of bleach to 1 quart of water. Apply solution by spray and wipe off immediately. (Always test in an inconspicuous area first.)

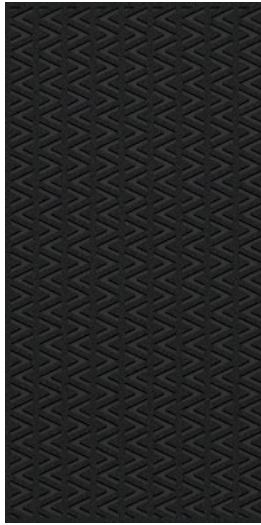


PATTERNS

8 TONE-ON-TONE PATTERNS

48" x 96" PANELS

2 - 1/2" PET PANELS ATTACHED TOGETHER
(CONTACT YOUR LOCAL SALES REP FOR
CUSTOM PATTERN OPTIONS)



BANDA 2T



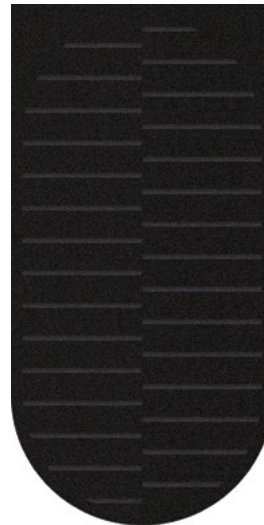
BOSCO 2T



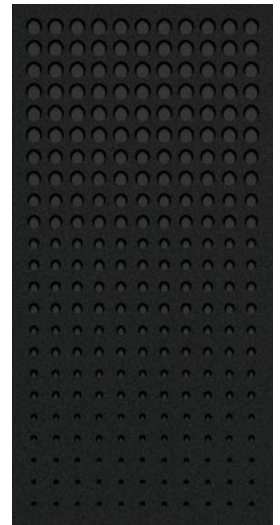
CAMPO 2T



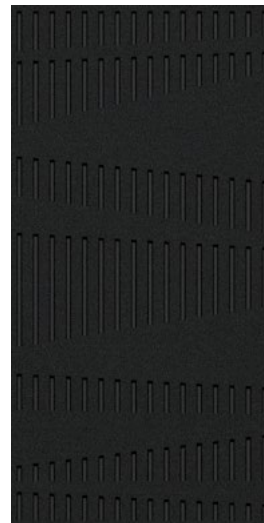
CUBINI 2T



CURVA 2T



GOCCIO 2T



LUOGO 2T



PISTA 2T

PATTERNS

8 TWO-TONE PATTERNS

48" x 96" PANELS

2 - 1/2" PET PANELS ATTACHED TOGETHER

SELECT 2 COLORS | FRONT PANEL & BACK PANEL

(CONTACT YOUR LOCAL SALES REP FOR
CUSTOM PATTERN OPTIONS)



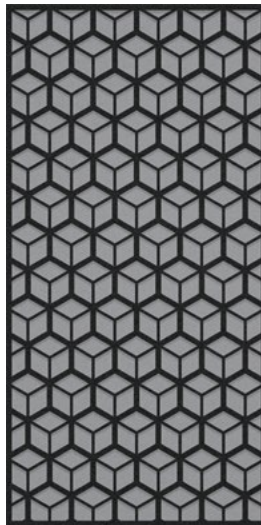
BANDA 2T



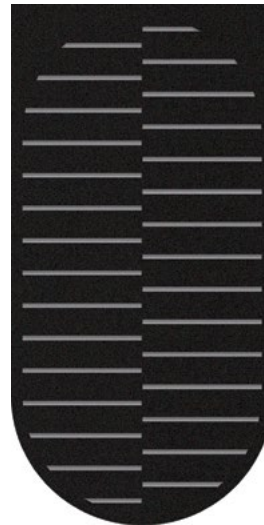
BOSCO 2T



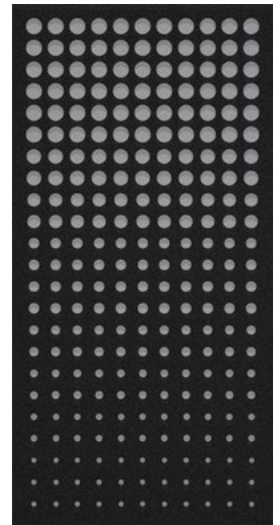
CAMPO 2T



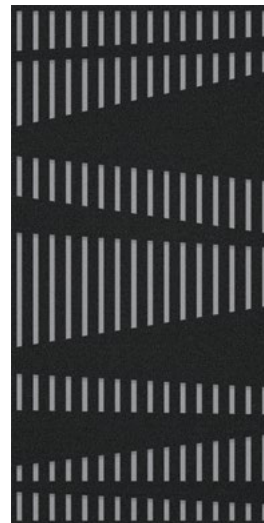
CUBINI 2T



CURVA 2T



GOCCIO 2T



LUOGO 2T

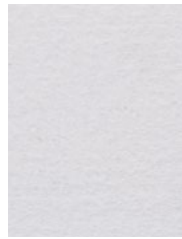


PISTA 2T

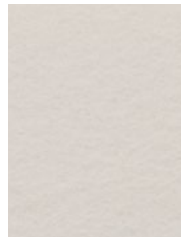
COLOR

MATTE COLOR

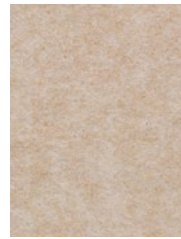
27 STANDARD COLORS
CUSTOM PRINT COLORS AVAILABLE
(CONTACT YOUR LOCAL SALES REP)
100% RECYCLABLE PET FELT



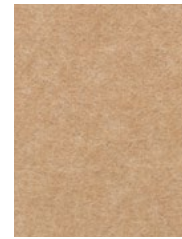
WHITE



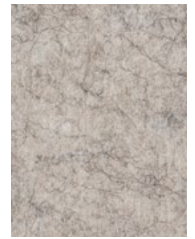
BONE



OATMEAL



CAMEL



SAND

TOLERANCES

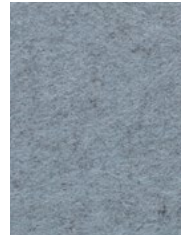
PET felt is made from 100% recyclable polyester plastic. Slight and consistent variations in color, depth, density, and texture are inherent to this core material and should be expected. Color, density and texture will vary by dye lot. MUTO is made with a 'felling' process which results in a textural heathered effect where the fibers consist of multiple tones and shades.



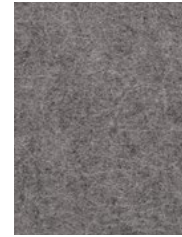
CASHMERE



FOG



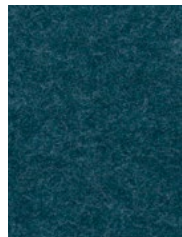
LAMB'S EAR



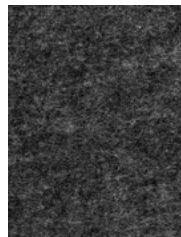
PEWTER



NORDIC KNIT



WINTER WATER



GRAPHITE



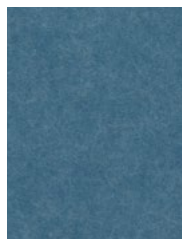
BLACK



MIDNIGHT



BLUEBERRY



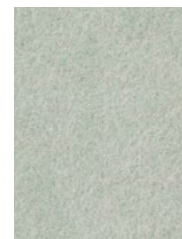
JUNIPER



SPLASH



STORM



SEAFOAM



SAGE



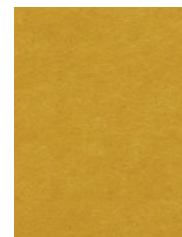
ARTICHOKE



LICHEN



SUNSHINE



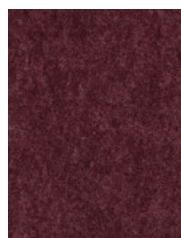
QUAKING ASPEN



CLEMENTINE



CHILI PEPPER



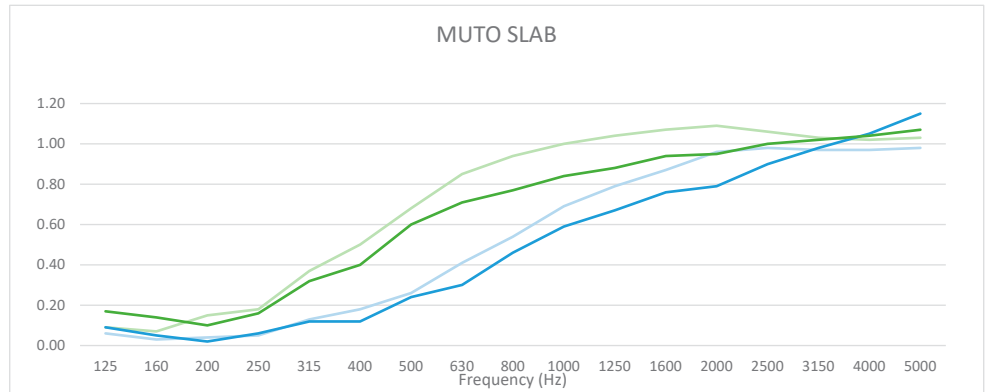
CURRANT

ACOUSTICS

NRC TEST DATA

Higher NRC ratings mean higher sound absorbency. The performance of 1/2" MUTO PET felt core material increases as the depth of air gap increases.

NRC values will vary based on customization and specific installation details. Contact your sales representative to learn more.



PRODUCT	MOUNTING	SAMPLE FREQUENCY (Hz)				NRC
		250	500	1000	2000	
1/2" MUTO	DIRECT	0.06	0.24	0.59	0.79	0.40
	Z-CLIP	0.05	0.26	0.69	0.96	0.50
1" MUTO	DIRECT	0.16	0.60	0.84	0.95	0.65
	Z-CLIP	0.18	0.68	1.00	1.09	0.75

ENVIRONMENTAL

DECLARE, MINDFUL MATERIALS & GREENGUARD GOLD CERTIFIED

We care about the environment and it matters that our materials support healthy and productive interior spaces. We use innovative materials but ensure that they meet the highest level of standards and expectations.

MUTO PET felt core material is 100% recyclable with no added urea formaldehyde.



INSTALLATION

ADHESIVE

Use standard construction adhesives (Liquid Nails | Titebond) and apply to the back of the panel maintaining at least a 1" border around the perimeter. Adhere to substrate providing bracing to hold material in place per adhesive curing time instructions.

STAND OFF HARDWARE

Using barrell and cap, secure panel and anchor to substrate as required. Six anchor points recommended for full sized panel.

CABLE SUSPENSION HARDWARE

Select appropriate and necessary anchor and / or screws to fasten top mount to ceiling. Determine location of panel clip (2 clips per panel) and mark and drill for set screw. Tighten set screw to secure clip to panel. Thread wire into gripper and adjust to desired length. Trim excess wire after leveling.

ZCLIP HARDWARE

Attach clips to the back of each panel with screw length to accommodate for the thickness of specified pattern. Anchor to substrate as required.

