


MUTO PRINT

acoustic panel solutions

 SOELBERG



MUTO PRINT

acoustic panel solutions

MUTO Acoustic Print Panels provide soft tactile texture with bold graphic patterns. Whether used for walls, ceilings, dividers or components, soft-patterned sound absorption is the solution for large noisy spaces with hard surfaces. Designing for the size of your space just got easier with 6 standard patterns in 3 different scales.

Make It Cool. Make It Quiet.

SPECIFICATION

CONTENT	100% POLYESTER (PET) FELT	
CORE THICKNESS	1/2" (12MM) FELT	
PATTERNS	DIVISO SCUDO	OMBRA TETTO
SCALE	SMALL, MEDIUM OR LARGE	
PANEL SIZE	48" x 96"	
WEIGHT	1/2 LB SQUARE FOOT	
ACOUSTICS	0.40 NRC	
FIRE RATING	CLASS A ASTM - E84	
ENVIRONMENTAL	DECLARE, MINDFUL MATERIALS & GREENGUARD GOLD CERTIFIED. MUTO IS PRODUCED FROM 100% RECYCLABLE PET FELT WITH A MINIMUM OF 60% PRE-CONSUMER RECYCLED CONTENT.	
LEAD TIME	2 - 3 WEEKS	
WARRANTY	2 YEARS	

CUSTOM

We offer custom print options and varying color combinations. Contact your local sales representative for more details. Vector files or high resolution jpg files are required for custom prints.

TOLERANCE

PET core is a soft fibrous material. All dimensions and squareness are subject to +/- 1/16" tolerance.

MAINTENANCE

Vacuum to remove dirt and dust. Remove spills or spots immediately using a clean damp cloth. Carpet and fabric cleaners can also be used to clean. (Always test an inconspicuous area first.) Compressed air may be used to dust in difficult or hard-to-reach areas.

To disinfect, bleach can be used in accordance with CDC Cleaning & Disinfection instructions. The solution ratio is 5 tablespoons of bleach to 1 gallon of water | 4 teaspoons of bleach to 1 quart of water. Apply solution by spray and wipe off immediately. (Always test in an inconspicuous area first.)



PATTERN

DIVISO

PANEL SIZE: 48" x 96"

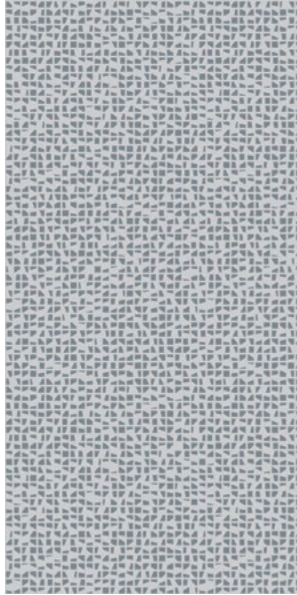
CORE COLOR: CASHMERE

SCALE: SMALL, MEDIUM & LARGE

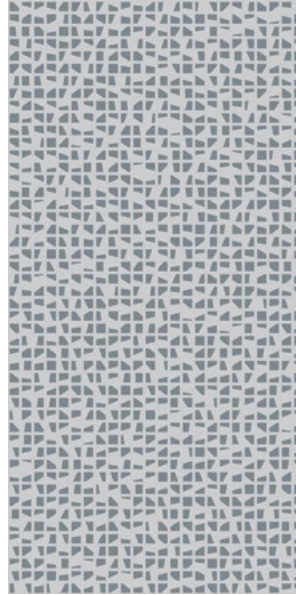
SEAM REPEAT: HORIZONTAL & VERTICAL



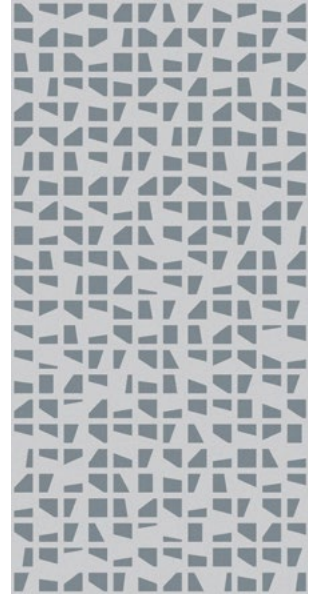
CASHMERE



DIVISO SMALL



DIVISO MEDIUM



DIVISO LARGE

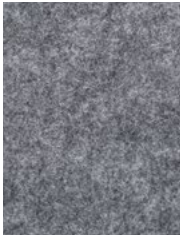
OMBRA

PANEL SIZE: 48" x 96"

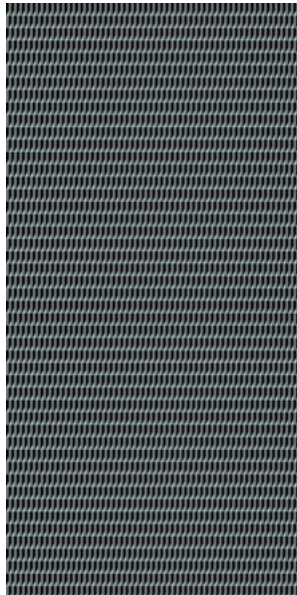
CORE COLOR: NORDIC KNIT

SCALE: SMALL, MEDIUM & LARGE

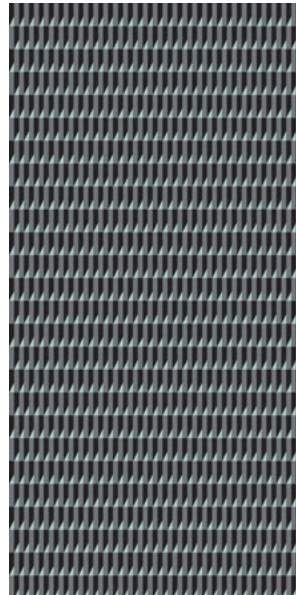
SEAM REPEAT: HORIZONTAL & VERTICAL



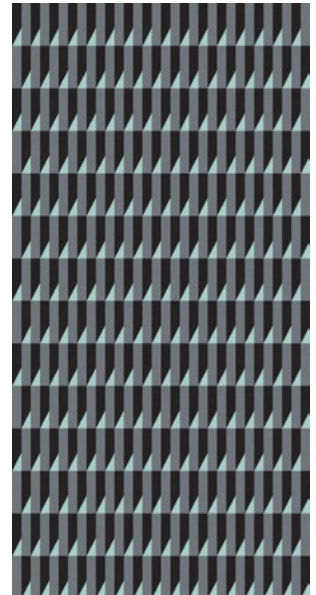
NORDIC KNIT



OMBRA SMALL



OMBRA MEDIUM



OMBRA LARGE

PATTERN

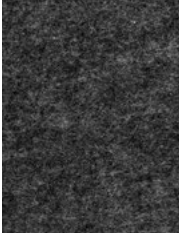
SCUDO

PANEL SIZE: 48" x 96"

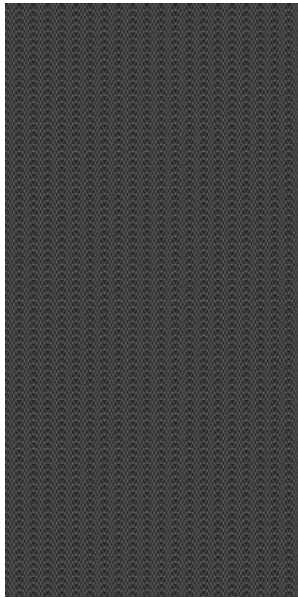
CORE COLOR: GRAPHITE

SCALE: SMALL, MEDIUM & LARGE

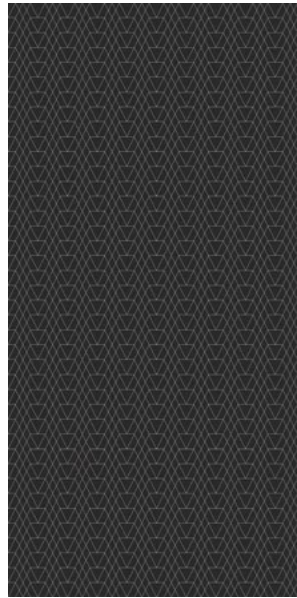
SEAM REPEAT: HORIZONTAL & VERTICAL



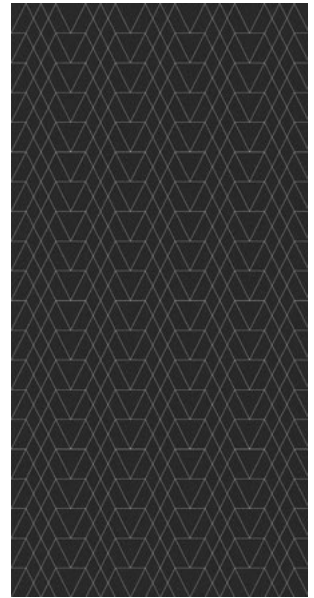
GRAPHITE



SCUDO SMALL



SCUDO MEDIUM



SCUDO LARGE

TETTO

PANEL SIZE: 48" x 96"

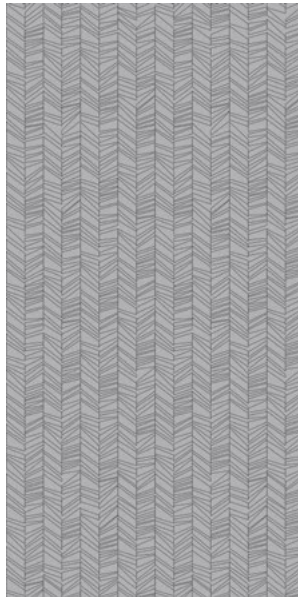
CORE COLOR: CASHMERE

SCALE: SMALL, MEDIUM & LARGE

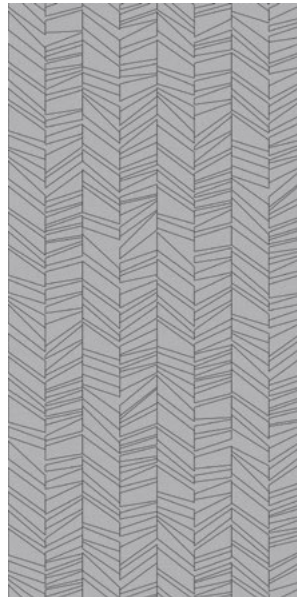
SEAM REPEAT: HORIZONTAL & VERTICAL



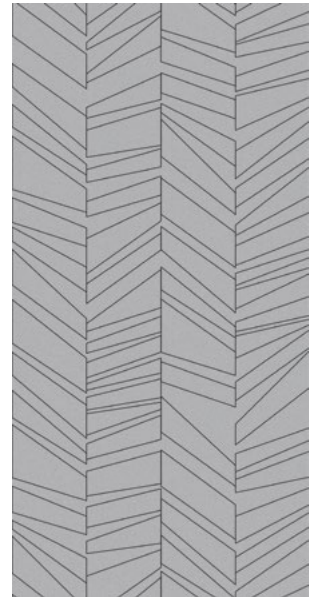
CASHMERE



TETTO SMALL



TETTO MEDIUM



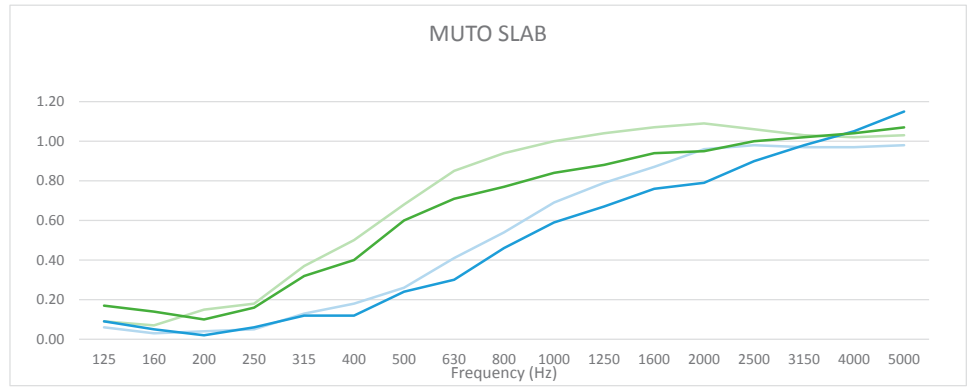
TETTO LARGE

ACOUSTICS

NRC TEST DATA

Higher NRC ratings mean higher sound absorbency. The performance of MUTO Texture increases with an air gap between panel and wall.*

NRC values will vary based on customization and specific installation details. Contact your sales representative to learn more.



PRODUCT	MOUNTING	SAMPLE FREQUENCY (Hz)				NRC	SAA
		250	500	1000	2000		
1/2" MUTO	DIRECT	0.06	0.24	0.59	0.79	0.40	0.42
	Z-CLIP	0.05	0.26	0.69	0.96	0.50	0.49
1" MUTO	DIRECT	0.16	0.60	0.84	0.95	0.65	0.64
	Z-CLIP	0.18	0.68	1.00	1.09	0.75	0.74

ENVIRONMENTAL

DECLARE, MINDFUL MATERIALS & GREENGUARD GOLD CERTIFIED

We care about the environment and it matters that our materials support healthy and productive interior spaces. We use innovative materials but ensure that they meet the highest level of standards and expectations.

MUTO PET felt core material is 100% recyclable with no added urea formaldehyde.



INSTALLATION

ADHESIVE

Use standard construction adhesives (Liquid Nails | Titebond) and apply to the back of the panel maintaining at least a 1" border around the perimeter. Adhere to substrate providing bracing to hold material in place per adhesive curing time instructions.

ZCLIP HARDWARE

Attach clips to the back of each panel with screw length to accommodate for the thickness of specified pattern. Anchor to substrate as required.

STAND OFF HARDWARE

Using barrell and cap, secure panel and anchor to substrate as required. Six anchor points recommended for full sized panel.

